

GENERAL

Mammoth™ 100% polyester insulation is safe and easy to install. Mammoth™ Multi is designed to be installed under the floor of new or existing homes or buildings. It will create a warmer, healthier home or work environment.

BEFORE YOU GET STARTED

SAFE TO INSTALL

- It won't irritate your skin when you touch it- in fact it is made from the same material that you may find in your pillows and duvets
- For further safety information on installing insulation refer to NZS4246 Appendix B the HSE Act and the Insulation Association of New Zealand booklet of safe practices.

EASY TO INSTALL

- Manufactured in sections, it is easy to install as it is friction fitted and squeezed to fit snugly between the underfloor joists.



- Mammoth™ Multi Underfloor comes in pre-cut sections which are varying widths.

Before installation, measure the distances between floor joists. We recommend every single bay is measured as joist spacing can vary in a house. This will help in selecting the appropriate width(s) to minimise cutting and installation time.

RECOMMENDED TOOLS

- Wide blade craft knife with a pack of replaceable blades or specialised insulation saw such as Bahco
- Tape measure and/or digital laser meter
- Multi LED headlamp
- Glow spray paint
- Ventilated goggles, dust mask and protective clothing (for protection from dirt, dust, spiders and other safety risks)

CUTTING THE PRODUCT TO FIT

- On-site cutting should be kept to a minimum using the recommended knife and blades. Change the blade regularly
- Avoid cutting Mammoth™ Multi Underfloor against joists or bearers, or near electrical wiring

THINGS TO LOOK OUT FOR

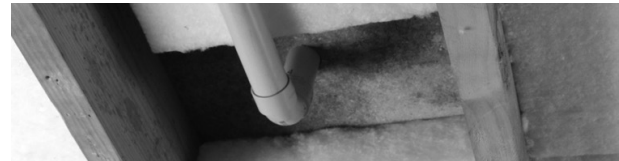
When installing Mammoth™ Multi Underfloor you may come across:

Electrical Wires

- Mark the position of the electrical wire and telephone lines. Where possible Mammoth™ Multi Underfloor should be fitted behind electrical wires
- Take care not to damage electrical wires or phone lines - treat all wires as live
- Warning tags should be placed at points where Mammoth™ Multi Underfloor covers electrical wiring

Pipes Under The Floor

- Maintain a 100mm gap between the Mammoth™ Multi Underfloor and waste pipes. This will also ensure adequate room for a serviceman requiring access to the pipes



Lights

- For lights under the floor maintain a 200mm gap between Mammoth™ Multi Underfloor and the light

Is your home brick veneer or a building with ventilated cavity in the wall?

- Do not block the ventilated cavity with insulation, as it will reduce the air circulation and result in moisture in the wall. Only fit Mammoth™ Multi Underfloor to the outer edge of the bottom plate, leaving the cavity clear

Other Hazards/Obstructions

- Maintain a 50mm clearance for brick/concrete chimneys. For other clearances please refer to NZS4246

INSTALLING MAMMOTH™ MULTI UNDERFLOOR

The product is designed to be friction fitted between the floor joists. Allow 5-35mm pad width, over the gap between the inside of the floor joists to ensure a snug fit.

1. Begin by sitting the long edge of the pad against the inside of the joists



2. Fit the section hard up the floor boards and fold the remainder of the pad hard against the other joist.

R-Value

This product will achieve nominal thickness and R-Value within 72 hours after being fitted. However the performance of the product may be reduced if stored for a prolonged period of time in its compression packaging.

The total installed R-Value of InsulPro Polyester Insulation depends on the building materials, design and installation and may be greater, equal or less than the stated R-Value of the product.

Manufactured by: InsulPro Manufacturing Ltd 27 Birmingham Road, East Tamaki, Manukau 2013

3. To minimise cutting, the product can be folded down on one side of the joist or double folded. The fold can protrude below the bottom of the joist by up to 15mm. Where floor joists are spaced 500mm or greater, additional support may be required to prevent sagging



4. Fit the next pad by butting both ends together without gaps. It should sit firmly in place. There should be no tucks or creases

5. Continue the process until the underfloor is fully insulated

6. At the end of the installation check and repair any visible gaps. Use any offcuts to fill small gaps